

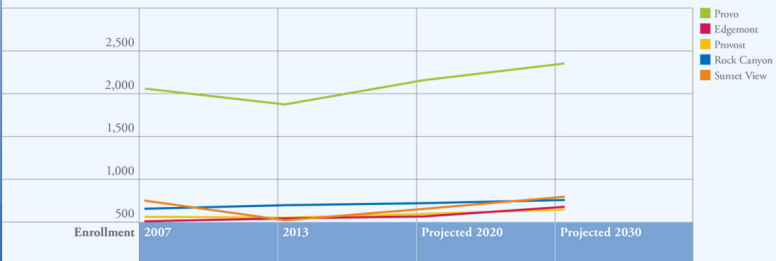
BOND PLANNING

2014 Facts Sheet

SCHOOL ENROLLMENT PROJECTIONS*

Provo City School District	2007 Enrollment	Current Enrollment	Projected 2020 Enrollment	Projected 2030 Enrollment	Current Building Capacity without Portables
Provo High School	2,104	1,700	2,219	2,363	145
Edgemont Elementary	560	566	591	616	630
Provost Elementary	516	521	545	571	660
Rock Canyon Elementary	668	693	723	754	720
Sunset View Elementary	763	532	651	692	810

Our schools are growing!



Projected growth in the identified schools is planned for in the proposed school replacement. Growth projections suggest that a new middle school may be needed in the south west area of the district. The proposed bond includes funds to purchase land for this future school. * Source: Bonneville Research

What is bonding?

Taxing the full amount of a building lasting 50 years in one year would put an undue burden on citizens, bonding is a way for government entities to borrow money for large projects and repay the money borrowed over time with future tax revenue. Our current operating budget cannot support new schools without bonding.

Who passes the bond?

The bond will be on the November 2014 ballot. Voting citizens will vote to pass the bond.

Which schools need to be replaced?

Provo High School along with Edgemont, Provost, Rock Canyon and Sunset View elementary schools, are on the proposed project list. Dixon Middle and Wasatch Elementary are slated for replacement on the next bond cycle in order to keep tax burdens at a reasonable level.

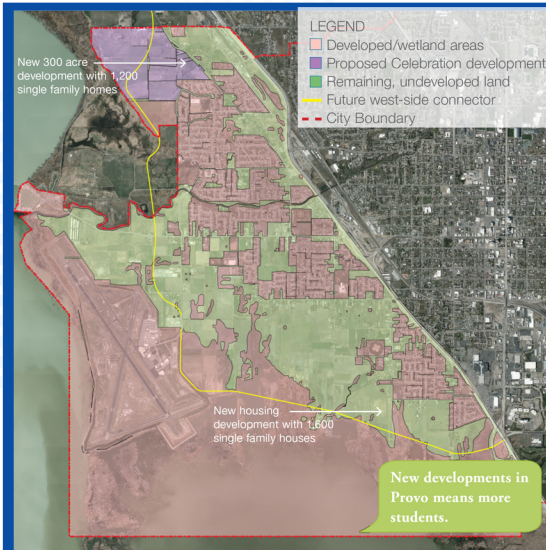
The five proposed schools were evaluated to have significant deficiencies which require immediate action.

How were these schools identified for replacement?

The District commissioned an independent facility assessment, conducted by a team of architects and engineers, evaluating and rating all of our existing schools and facilities. We also formed a Facility Advisory Committee (FAC), made up of community members from around the District, to evaluate the data and forward replacement recommendations to the Board of Education. The District and School Board have followed the recommendations of the building assessment and FAC in proposing a \$108 million bond.

The District, together with the FAC and architectural consultants, are working to determine the best approach to replace these schools.

- We are evaluating the proposed school size with regard to projected enrollment and growth over the next 20 years.
- We are considering life-safety, security, healthy schools, daylight, learning environment and modern curricula.
- We are studying school boundaries and growth projections.
- We are evaluating building costs of past and current projects around the district and county to ensure we are getting the highest value.



*Source: Provo City Planning

Provo City Projection Growth Map

Provo City Demographics

- The five-year (2017) population projection for Provo city is 127,566 representing an increase of 2.03% annually, compared to a Utah County increase of 2.37%, a State of Utah change of 1.72% and a U.S. increase of 0.68%.
- In the five year period from 2007-08 to 2011-12, Dixon, Edgemont, Provost, and Rock Canyon schools collectively added 166 new students.
- Portable classrooms are used to house 360 students at Dixon, Edgemont, Provost, and Rock Canyon Schools.
- The State of Utah and Mountainland Association of Governments baseline population projections for Provo City are:

Year	2020	2030	2040	2050	2060
Population Projection	126,377	131,068	151,877	170,600	189,400

What is the plan that will keep us from ending up in this position in the future?

The short answer is to pass the bond. We have done our homework and have a plan in place to address our needs. The bond is the first step..

How is the District planning for future growth?

In an effort to avoid building schools which seem oversized for current enrollment while also avoiding the need for portables at new schools, we are carefully evaluating the growth projections to ensure that we build the proposed replacements at the correct capacity. In addition, we are looking for opportunities to purchase land in the developing areas for potential new school locations in the future.

Does the District have a long-term plan?

Yes, we have a plan based on reviews performed by a group of architects, engineers and the FAC. The plan addresses a sequence of needs throughout the District and is being monitored. These needs will be reviewed and applied to future plans for reconstruction.

If a school is slated for rebuild on the next bond, how do we ensure that it will happen?

While there is no 100% guarantee (due to unexpected issues such as a sinkhole, severe water damage, earthquake damage, etc.), we have created a plan with the purpose of addressing our needs. We have a list of schools in need of replacement and that list will be used to determine future projects.

Our schools
are growing!

Provo City School District	2007 Enrollment	Current Enrollment	Projected 2020 Enrollment	Projected 2030 Enrollment	Current Building Capacity without Portables
Provo High School	2,104	1,700	2,219	2,363	145
Edgemont Elementary	560	566	591	616	630
Provost Elementary	516	521	545	571	660
Rock Canyon Elementary	668	693	723	754	720
Sunset View Elementary	763	532	651	692	810

Has the board looked into building “green” schools and using solar panels to reduce costs?

We are considering all options for safety and energy efficiency.

Is it required to bond in 2014 or could we wait to bond in 2015 and prepare more?

Our schools need help now and we feel it cannot wait. A year lead-time will provide opportunity to do our due diligence and prepare sufficiently. Also, if we wait there is a chance our bond could be in competition with a future Provo City bonds, should one arise.

Why do we have to bond?

School districts bonding to rebuild schools is the same as taking out a mortgage for a house. Bonding allows districts to address current needs and improve the safety and quality of students.

Can the District replace the deficient schools without bond money?

If we save funds by diverting dollars from instructional programs, we may be able to replace one school at a time over the next several decades. Our needs cannot wait that long. Bonding is the only sustainable way to address our most pressing needs in a timely manner.